

Description

Endura-Seals are a new patented CRS alternative to typical silicone-rubber injection port septa for gas chromatography. They work in a 2-part sealing system that includes the septa and the sealing nut.

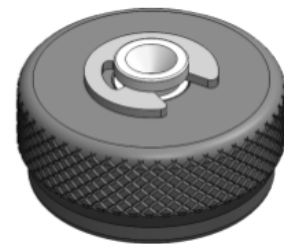
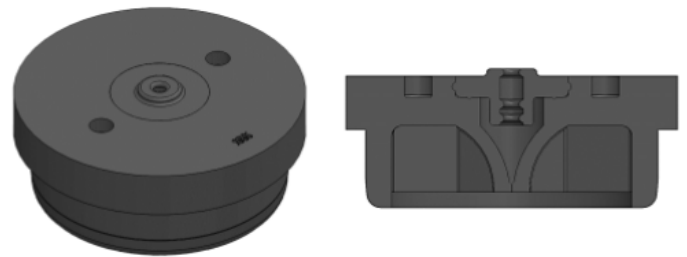
The duckbill valve and wiper seal combination in the Endura-Seals is much more resistant to needle wear and tear than traditional pierced septa. While CRS premium septa are already designed to reduce coring (particles in the liner), the Endura-Seals allow the needle to glide through the valve to virtually eliminate such particles. The Seals utilize a more cost-effective elastomeric spring design instead of the metal spring used in some competing designs. These features make the Endura-Seal septa an ideal choice for automated analyses in the long sequences used with today's high capacity autosamplers.

The Endura-Seals are available in 11 mm and Shimadzu style kits. Each kit includes 1 sealing nut and 2 septa. 11 mm Endura-Seals will fit in most instrument ports without the need for an adapter kit.

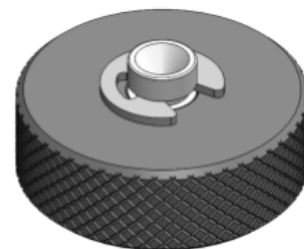
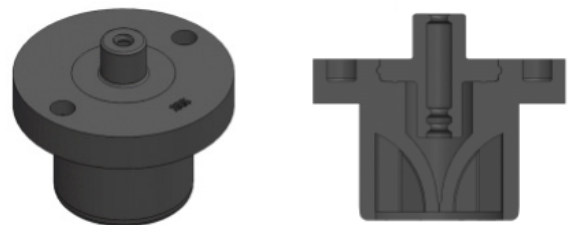
Specifications

Sizes	11 mm and Shimadzu style
Needle	23 Gauge Cone Tip Only
Max Pressure:	100 PSI
Max Temp:	400°C

Order Info	Item No.
Endura-Seals Septa Kit- 11 mm	250111
Endura-Seals Septa Kit - Shimadzu	250100



11 mm



Shimadzu